

FILM PRODUCTION EMERGENCY RESPONSE PLAN - Complex

Film Production Location Manager to Do:

- Report any accident, medical incident or injury that took place in the Public Realm during the Production (including set-up and take-down) that requires First Aid or an Emergency Services response.
- Review the emergency response plan with volunteers, vendors, crew, actors, performers, Security, Fire Aid personnel or anyone else involved in the Film Production.

KEY ON SITE EMERGENCY CONTACTS

Film Production staff and volunteers must know who is in charge in case an emergency decision is required. The person in charge should be available at all times either through a communication device or being in a central location. If you are working in shifts, please identify the date/time frame for each contact. If more space is required, please attach a separate sheet.

Name	Day of Film Production Contact Number	Date(s)	Hours on Site

ON SITE SAFETY & SECURITY YES NO

Name	Day of Film Production Contact Number	Date(s)	Hours on Site

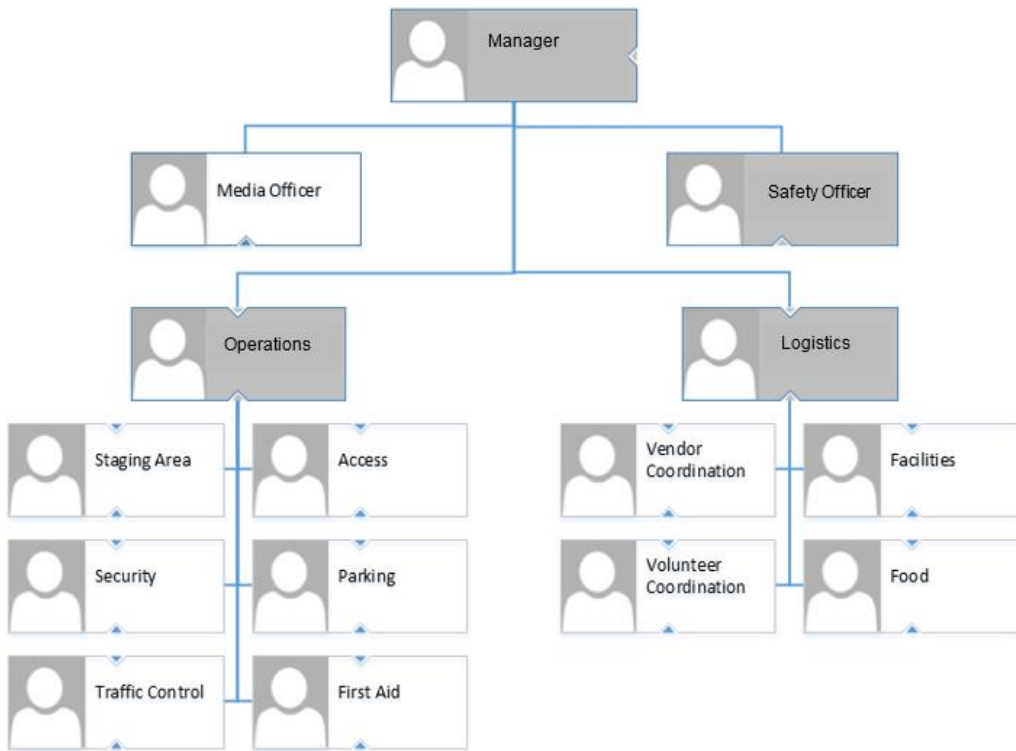
FIRST AID SERVICES ON SITE

Name	Day of Film Production Contact Number	Date(s)	Hours on Site

OTHER CONTACTS

Who	When	How
Emergency Services	In the event of a medical, fire or any other type of emergency.	911

FILM PRODUCTION ORGANIZATIONAL CHART



- Mandatory** If a mandatory position is not filled, the position becomes the direct responsibility of the Special Event Organizer.
- As Needed** If a discretionary position is not filled, the position becomes the responsibility of a mandatory position or the Special Event Organizer.

EMERGENCY PROCEDURES PLAN

This section is to be completed by the Film Production Location Manager. The scope of your emergency plan will vary depending on the nature, size and activities involved in the Film Production. At a minimum, identify the steps to be taken for the scenarios below:

First Aid/Medical Emergencies

-
-
-
-

Fire

-
-
-
-

Missing Person/Child

-
-
-
-

Security Incident

-
-
-
-

Site Evacuation

-
-
-
-

Extreme Weather

-
-
-

Film Production Cancellation/Postponement

-
-
-

SITE MAP

(attach map)